

Action: Addressing global inequities in breast cancer genetic testing, counselling, and management among breast cancer patients in Nigeria

Designing an Interview Guide to Explore Patient Experiences



Shay Meyer¹, Funmilola Olanike Wuraola², Jenine Ramruthan³, Emma Reel³, Colleen Kerrigan⁴, Andrea Covelli⁴, Anna Dare⁴, Raymond Kim⁶, Larissa Peck⁶, Emily Thain⁶, Janet Papadacos⁷, Danielle Rodin⁸, Michelle Jacobson⁹, Nneka Nweke-Sunday¹⁰, Olayide Agodirin¹¹, Olusegun Isaac Alatise², Tulin Cil^{3,4,5}

¹ University of Toronto, Toronto, Canada; ² Obafemi Awolowo University Teaching Hospital Complex, Surgery, Ile Ife, Nigeria; ³ University Health Network, General Surgery, Toronto, Canada; ⁴ University of Toronto, Surgery, Toronto, Canada; ⁵ Sprott Department of Surgery, University Health Network, Toronto, Canada; ⁶ Princess Margaret Cancer Centre, Genetics, Toronto, Canada; ⁷ Princess Margaret Cancer Centre, Cancer Education, Toronto, Canada; ⁸ Princess Margaret Cancer Centre, Global Cancer Program, Toronto, Canada; ⁹ Women's College Hospital, Obstetrics and Gynaecology, Toronto, Canada; ¹⁰ Federal Teaching Hospital Abakaliki, Surgery, Abakaliki, Nigeria; ¹¹ University of Ilorin Teaching Hospital, Surgery, Ilorin, Nigeria

Background

- **Problem:** Patients with breast cancer in Nigeria have poor survival rates compared to Western populations¹. Despite high prevalence of hereditary breast cancer², there is limited access to genetic testing (GT) in this region.
- **Action study:** Delivered a genetics training program to Nigerian HCPs → offered *BRCA1/2* GT & genetic counselling to 100 patients with breast cancer across three centres
- **The purpose of this study is to conduct a qualitative analysis to evaluate the impact of *BRCA* testing on patients within the Action Study.**

Objective

Develop semi-structured interview guide exploring breast cancer patient perspectives of genetic testing & genetic counselling provided in the Action Study

Methods

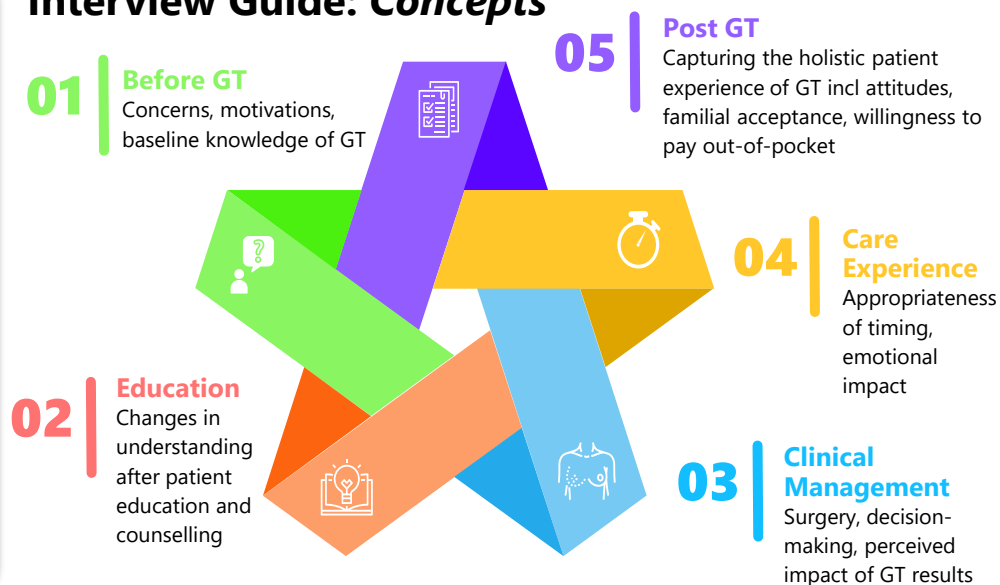
1. **Conduct a literature review:** Identified and reviewed qualitative studies and interview frameworks examining patient experiences with GT & counselling in North America and Sub-Saharan Africa
2. **Guide development:** Developed and iteratively refined initial draft of the semi-structured interview guide.

Results

Literature Review

- ❖ **Few studies** from LMICs explore genetic testing before cancer treatment
- ❖ **Seven interview guides were identified** - majority were implemented in high-income countries.
- ❖ Guides focused on patient knowledge, emotional responses, and decision-making but **lacked cultural and contextual relevance for Nigeria/SSA.**

Interview Guide: Concepts



Next Steps

This is one of the first studies on treatment-focused genetic testing in Nigeria.

- The guide will be translated to 3 local languages & used to conduct in-depth, semi-structured interviews to 40 patients who received *BRCA+*, *BRCA-* & *VUS* GT results
- Findings will support the scale up of GT in Nigeria and contribute to advancing global equity in breast cancer care within LMICs

Acknowledgments



References

1. Ali-Gombe M, Mustapha MI, Folasire A, Ntekim A, Campbell OB. Pattern of survival of breast cancer patients in a tertiary hospital in South West Nigeria. *Eancermedicalscience*. 2021;15:1192.
2. Zheng Y, Walsh T, Gulsuner S, Casadei S, Lee MK, Ogundiran TO, et al. Inherited breast cancer in Nigerian women. *Journal of clinical oncology*. 2018;36(28):2820.